

FOR SALE

RESIDENTIAL - SEMI-DETACHED HOUSE 6,168SQFT (573SQM) / CALL FOR PRICE!

+65 9817 0028



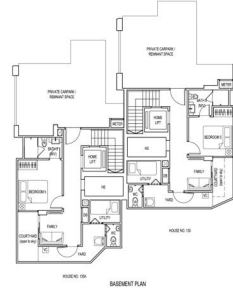
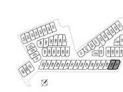
5-Bedroom + Family + Utility

TYPE 135A

6,168 sqft

TYPE 135

5,543 sqft



BASEMENT PLAN

RESIDENTIAL - SEMI-DETACHED HOUSE

131C, WHITLEY ROAD, NEWTON, NOVENA,
SINGAPORE 297644

- LISTING ID: SGLD66312119
- TENURE: FREEHOLD
- TITLE: N/A
- SIZE BUILT-UP: 6,168SQFT (573SQM)
- SIZE LAND: 2.988AC (1.209HA)
- NO. OF FLOORS: 4
- FLOOR/LEVEL: N/A - N/A
- BED ROOMS: 5+2
- BATH ROOMS: 5
- MAIDS ROOMS: N/A
- PARKING SPACES: 2
- LAYOUT TYPE: REGULAR
- FACING: N/A
- VIEWING: OTHER
- SELLING PRICE: **CALL FOR PRICE!**
- COMPLETION YEAR: 2017
- CONDITION: ORIGINAL CONDITION
- FURNISHING: PARTIALLY FURNISHED
- LISTING DATE: OCT 01, 2019

THE WHITLEY RESIDENCES

Spacious 6,168sqft (573sqm), partially furnished, 5 bedroom, 5 bathroom Semi-Detached House for Sale. Completed in 2017, this unit is in original condition. Others: Freehold, 2 other room(s), 2 parking space(s) This property is currently vacant and ready to move in. Located in Singapore's district D11 near Newton, Novena in the area Newton (Central region).

INTERIOR FACILITIES

- Terrace
- Walk-In-Wardrobe
- Private Lift

OTHER INTERIOR FEATURES

- Cooker Hob/Hood

EXTERIOR FACILITIES

- 24 Hours Security
- Clubhouse
- Covered Car Park
- Jacuzzi

VISIT THIS PROPERTY AT: <https://www.maureenneo.sg/property/SGLD66312119>

MAUREEN NEO - HUTTONS ASIA PTE LTD

3 Bishan Place #05-01 CPF Bishan Building
D20, 579838, Singapore

+65 9817 0028
WhatsApp Me

maureen.nbl@gmail.com

<https://www.maureenneo.sg>



Scan QR Code

L3008899K
R044019E

Huttons® Call for Viewing
The Agency of Choice +65-98170028